



St. Peter's Hospital

ANNUAL REPORT TO
THE COMMUNITY

2016-2017

CONTENTS:

Greetings from the Interim CEO.....	1
St. Peter's Hospital Board of Directors.....	3
Who We Serve: About Our Community.....	4
How We Serve: Key Service Lines.....	4
Contributions to the Community.....	6
Where We've Been: 2016 Accomplishments.....	8
Where We're Going: 2017 Priorities.....	9
Snapshot: Investments in Your Hospital.....	12
Who We Are: Physicians and Professional Staff.....	14
Our Foundation.....	16
Funds and Corporate Sponsors.....	18
Legacy of Life Members.....	19
2016 Donors.....	20
2016 Fundraising Events.....	25

Mission

St. Peter's Hospital partners with our patients, community, and medical staff to provide exceptional and compassionate health care.

Vision

To be the best place in the region to receive patient care, to practice medicine and to work.

Values

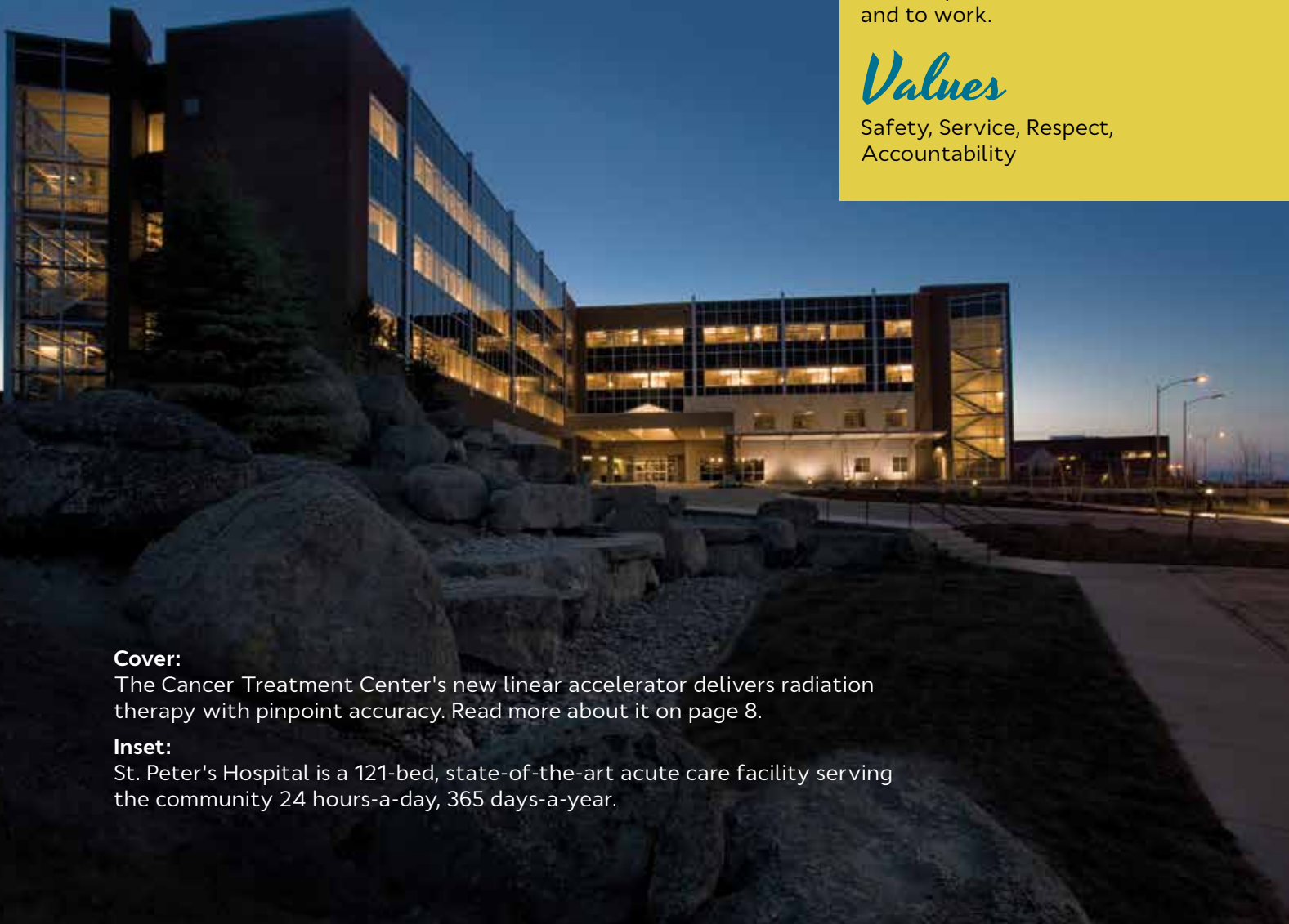
Safety, Service, Respect, Accountability

Cover:

The Cancer Treatment Center's new linear accelerator delivers radiation therapy with pinpoint accuracy. Read more about it on page 8.

Inset:

St. Peter's Hospital is a 121-bed, state-of-the-art acute care facility serving the community 24 hours-a-day, 365 days-a-year.



Dear Neighbor,

As a physician in Helena for more than 30 years, I was honored to be chosen as St. Peter's Interim CEO to assist the organization in its transition to new leadership. Over the past year, I've worked with our staff, physicians and Board of Directors to begin to address the most pressing concerns identified by our community. The outcome is a new set of strategic initiatives for St. Peter's designed specifically around these key priorities and how we will hold ourselves accountable to delivering on them.

I'd like to touch on a few of these initiatives, as well as share some of the progress we've made.

Patient Billing

Our billing system wasn't functioning effectively and was a source of frustration to many in our community. As of last November, we've changed to an entirely new billing process. The new technology increases accuracy and timeliness, and delivers easier to understand billing statements. We also provide patients with cost estimates and a financial counselor to explain costs and navigate payment options before receiving a medical service. We are receiving fewer complaints with this new system in place, but please let us know of any lingering issues.

Access to Local Care

A predominant concern in our community is the availability of physicians and treatments. After conducting a community needs assessment, we identified the need to recruit 12 primary care and 18 medical and surgical specialist providers to expand the care we provide locally and reduce waiting times. Our new, state-of-the-art Varian TrueBeam linear accelerator delivers precision radiation therapy and gives us the ability to treat most cancers here in Helena. We're also expanding our Radiation Oncology clinic to accommodate our growing number of patients, and this fall we'll complete our Endoscopy Suite expansion so we can accommodate an additional 2,000 colonoscopies each year.

Management Structure

Historically, our governance model has been in support of traditional hospital operations, which served us well for many years. Today, we need a management structure that supports both St. Peter's Hospital and the St. Peter's Medical Group, with its 57 physicians and 27 advanced practice providers, as an integrated system of care. Our new governance model will incorporate the clinical leadership of our physicians with newly recruited senior leaders that have experience managing from an integrated perspective.

Quality

Quality care and the safety of patients top our list of priorities. While we continuously identify areas for improvement across the health care experience, St. Peter's is already doing a number of things very well. In 2016, St. Peter's was the only hospital in Montana to score straight "As" with Leapfrog, the nation's leading patient safety watchdog organization. And, our Dialysis Center is nationally recognized for its innovative approach to improving patient quality of life, with a rate of home therapy nearly five times the national average. Going forward, our top priority is to improve the patient experience in each of our inpatient, outpatient and clinic locations. We're always seeking to improve, and I'm confident that with the team of people at St. Peter's, we will be successful.

Thank you for the opportunity to serve the community I call home,



Fred Olson, M.D.
Interim President and CEO



GREETINGS FROM THE BOARD CHAIR

Dear Friends,

As you know, St. Peter's Hospital is in the midst of an important transition. We face some unique and significant challenges, but your Board of Directors is committed to working through them and elevating our level of service to the community.

First and foremost, I'd like to thank staff, physicians and patients for helping us **IDENTIFY THE KEY ISSUES WE NEED TO ADDRESS**. Turnover within senior leadership can force stress on any organization, but we saw an opportunity to step back and re-evaluate whether St. Peter's is positioned to deliver on our service promise both now and in the future. With your help and patience, we've recalibrated our priorities and restructured our operations to begin closing the gaps, so that as we move forward, it's from a position of strength.

Certain challenges, like access to a wide variety of health care, are ongoing challenges for communities like ours—we simply don't have the population to warrant depth in every specialty. That said, we are in the beginning stages of implementing a Medical Staff Development Plan that calls for the expansion of our Medical Group and the addition of more than 30 new physicians across primary and specialty care service lines. **OUR GOAL IS TO VASTLY IMPROVE ACCESS, REDUCE WAIT TIMES AND OFFER CHOICES FOR OUR PATIENTS** in many of the areas currently being underserved.



Though we face challenges, we do have many accomplishments to be proud of—and many more things to be thankful for. First, our talented, dedicated and compassionate staff and physician partners work tirelessly around the clock to care for people when they need it most. I'd also like to commend the Board of Directors for stepping up to confront the important issues and taking the time to listen. Finally, I'd like to thank you, our community. St. Peter's exists for no other reason than to serve you, and **WHEN YOU SPOKE, WE LISTENED**. All the improvements underway at St. Peter's are in an effort to better serve you, so that when you need us most, we'll be here.

Some of the most difficult journeys are also the most rewarding, and we have an amazing team of people at St. Peter's who are committed to its success. You and your family are in good hands.

In partnership,

A handwritten signature in black ink that reads "Mark R. Taylor". The signature is stylized and fluid.

Mark Taylor, Chair
St. Peter's Hospital Board of Directors

HOSPITAL BOARD OF DIRECTORS



Guy Almquist
Treasurer



Dewey Bruce



John Galt, M.D.
Member at Large



Karen Hicks
Secretary



Andrew Malany, M.D.
Chief of Staff



William Northey
Past Chair



Fred Olson, M.D.
Interim President
and CEO



Kelly Parsley



Randy Riley
Foundation
Board Chair



Mick Robinson



Gayle Shirley



Todd Wampler, M.D.
Chief of Staff Elect

A PILLAR OF THE COMMUNITY

Serving our region for more than 130 years, St. Peter's is a community-owned, non-profit health care organization dedicated to providing care for every person who comes through our doors.

FOUNDED IN
1883

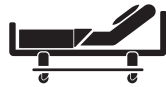
by the St. Peter's
Episcopal Church
Parish Vestry & The
MONTANA
Episcopal Diocese



1,386
employees
and staff



109 LOCAL PHYSICIANS
perform procedures at the hospital



121-BED acute care facility
INCLUDING A
22-BED INPATIENT Behavioral Health Unit



120 VOLUNTEERS
support patients and guests

SERVICES:

- Cancer Treatment Center
- Urgent Care
- Home Health & Hospice
- Dialysis Center
- Diagnostic Imaging
- Laboratory
- Pharmacy
- Physical Therapy, Rehabilitation & Sports Medicine

Please visit  stpetes.org or [facebook.com/stpetershelena](https://www.facebook.com/stpetershelena) to learn more.

ST. PETER'S
MEDICAL
GROUP:

20+
SPECIALTIES
from **FAMILY MEDICINE** and **OBSTETRICS** to **CARDIOLOGY & ORTHOPAEDICS**

13 member BOARD OF DIRECTORS comprised of **LOCAL residents**

WHO WE SERVE: ABOUT OUR COMMUNITY

St. Peter's service area extends far beyond the 30,000 residents of Helena.

Primary acute care hospital and major **HEALTH CARE PROVIDER** for **97,000+ RESIDENTS**

Service area covers **5 COUNTIES:**

- Lewis & Clark
- Jefferson
- Broadwater
- Powell
- Meagher

In 2016, St. Peter's provided health care for:



174,488 OUTPATIENT VISITS through services such as lab testing, imaging, rehabilitation, and more



98,217 CLINIC PATIENTS at our St. Peter's Medical Group physician clinics



30,678 URGENT CARE VISITORS to our two locations



25,661 EMERGENCY ROOM VISITORS



18,500 CANCER TREATMENT CENTER VISITS



5,692 INPATIENT ADMISSIONS



812 BABIES DELIVERED

HOW WE SERVE: KEY SERVICE LINES

St. Peter's provides compassionate, patient-centered care utilizing the most advanced treatments and technologies available today. Our highly trained and experienced physicians, nurses and medical staff focus on the needs of the whole patient. We also offer the most comprehensive list of medical services in the Helena area, including:

EMERGENCY SERVICES

When you or a loved one face a medical emergency, you want the best possible care that's close to home. The Emergency Department at St. Peter's Hospital provides quality, experienced care when you need it most—around the clock, 365 days-a-year. More than 25,000 patients depend on us each year to provide quality medical evaluation and treatment for illness and injury ranging from minor to critical.

ST. PETER'S MEDICAL GROUP

St. Peter's Medical Group provides comprehensive, high quality medical care through an impressive range of primary and specialty care physicians for a community our size. From family medicine practitioners and obstetricians to orthopaedic surgeons and interventional cardiologists, our growing family of physicians and professional staff manage a wide variety of our patients' health care needs. St. Peter's Medical Group also offers two locations for the convenience of our patients: St. Peter's Medical Group – Broadway, across from the hospital, and St. Peter's Medical Group – North, on the north end of Helena.

BEHAVIORAL HEALTH UNIT

St. Peter's Behavioral Health Unit offers a team of professionals that are here to help when you or your loved one is suffering from a mental health illness. At St. Peter's, we treat mental health illness as a medical condition. We provide a secure unit for adult and geriatric patients who are experiencing psychiatric symptoms that require 24-hour acute inpatient treatment. Our staff focuses on accurately diagnosing the illness, prescribing the right medications, and providing patients and caregivers with education and coping skills.

CANCER TREATMENT CENTER

St. Peter's Cancer Treatment Center combines state-of-the-art technology with a holistic, patient-centered approach to cancer care. We consistently rank in the top 5% of cancer centers throughout the entire Northwest region of the United States. Our oncologists, nurses and technologists provide specialized cancer care, while other professionals including social workers, dietitians, physical therapists, home health providers, spiritual practitioners and hospice staff are integrated members of the care team to ensure we treat the "whole" person, not just their disease. St. Peter's was one of the first cancer centers in Montana to offer a Patient Navigator, a dedicated professional that supports patients and their families by helping them navigate the health care system and connect with resources.

SURGICAL SERVICES

General surgery has long served as the foundation for St. Peter's inpatient and outpatient surgical services program. Today, our general surgeons are joined by a growing team of specialists in orthopaedic, colorectal and plastic surgery. Our board-certified surgeons deal with a broad spectrum of illness by combining an in-depth understanding of diagnostic and treatment strategies, perioperative (before, during, and after operation) care, and the latest advances in surgical techniques to achieve safe and successful surgical outcomes. We offer minimally-invasive surgical procedures, allowing patients to recover more quickly and return to normal activity.

WOMEN AND CHILDREN'S UNIT

St. Peter's Women and Children's nursing staff work closely with Helena's obstetricians, certified nurse midwives, family practice physicians, pediatricians and other specialists to provide safe, quality care to Helena's littlest patients. St. Peter's offers a preferred birthing experience with an emphasis on education and support that starts during pregnancy and continues after leaving the hospital. Private rooms have been thoughtfully designed for all stages of labor, delivery, recovery, and postpartum care, as well as to encourage "rooming in" of newborns to promote mother/baby bonding. In addition to our Labor and Delivery staff of 27 (plus five infant nutrition nurses), a Pediatrics staff of 18 specializes in providing inpatient care for a variety of acute illnesses for children up to age 18.



St. Peter's nephrologist Robert LaClair, M.D. and St. Peter's progressive home dialysis treatment were featured in a 2016 news story on National Public Radio.

DIALYSIS CENTER

St. Peter's Dialysis Center is nationally recognized for its innovative approach to improve the quality of life for dialysis patients using at-home hemodialysis therapy. With a rate of home therapy nearly five times the national average, St. Peter's Dialysis team helps patients with both end-stage and acute kidney failure utilize hemodialysis, home hemodialysis, peritoneal dialysis and other procedures.

EXCELLENCE IN CARE

St. Peter's was the only hospital in Montana to get straight "As" for safety in 2016. Awarded by the nation's leading patient safety watchdog organization, The Leapfrog Hospital Safety Score is a composite score made up of 30 different, nationally-reported patient safety measures that indicate how well hospitals protect patients from preventable errors, injuries and infections.



URGENT CARE

St. Peter's Urgent Care Clinics are walk-in medical facilities for the treatment of non-life threatening injuries and illness. An appointment is never required, and staff is committed to providing prompt and comprehensive medical services. To best serve our community, St. Peter's offers two locations: Urgent Care on the hospital campus on the east side of town, and Urgent Care at the North clinic on the north side of Helena.

St. Peter's Supports Our Community

As a community-based hospital and health care provider, St. Peter's mission is to improve the health of the community and provide quality health care services for all citizens, regardless of ability to pay. **Each year, we give back over \$14.4 million to the community through education, health services, donations, and free and reduced cost health care** to ensure that financial issues do not prevent patients from seeking or receiving care.

CHARITY CARE

Charity care consists of health care services provided to low-income patients at free or reduced prices, and is provided to those who have exhausted third-party resources, do not qualify for Medicaid or have insufficient incomes. Ability to pay is based on Federal Poverty Income Guidelines, which take into account family size, new assets, and overall financial position. Patients whose family income is at or below 175% of the Federal Poverty Level (FPL) are eligible to receive free care. Patients whose family income is above 175% but not more than 250% of the FPL are eligible to receive a discount of 50% of their account balance. St. Peter's makes significant efforts to ensure charity care is granted to all patients who qualify.

UNPAID COST OF MEDICAID

Medicaid is a jointly funded, Federal-State health insurance program for low-income individuals. Medicaid reimburses health care providers well below the actual cost of care, so the unpaid cost of Medicaid represents the difference between our cost and the amount Medicaid paid us for the services we provided.

SUBSIDIZED HEALTH SERVICES

The Helena region has a high need for several health care services that do not generate sufficient revenue to cover the cost of providing them. St. Peter's subsidizes the following services to ensure their availability to our community:

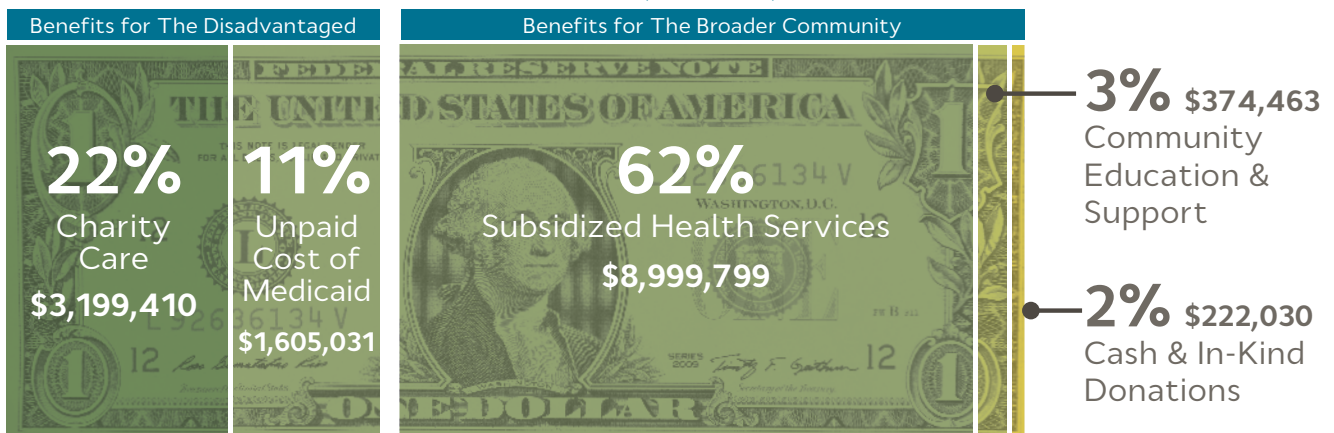
- Neonatal/Obstetrical/Newborn Care
- St. Peter's Medical Group physician clinics (primary care and specialties)
- Urgent Care
- Hospice/Home Health
- Hospital-based Pharmacy (the only pharmacy in the community open 24/7)
- Apex Home Oxygen
- Rehabilitation
- Clinical Nutrition
- Neuropsychology

COMMUNITY EDUCATION & SUPPORT

St. Peter's provides health-related education to the community through large events, classes, lectures and wellness screenings. Most are completely free-of-charge to the community.

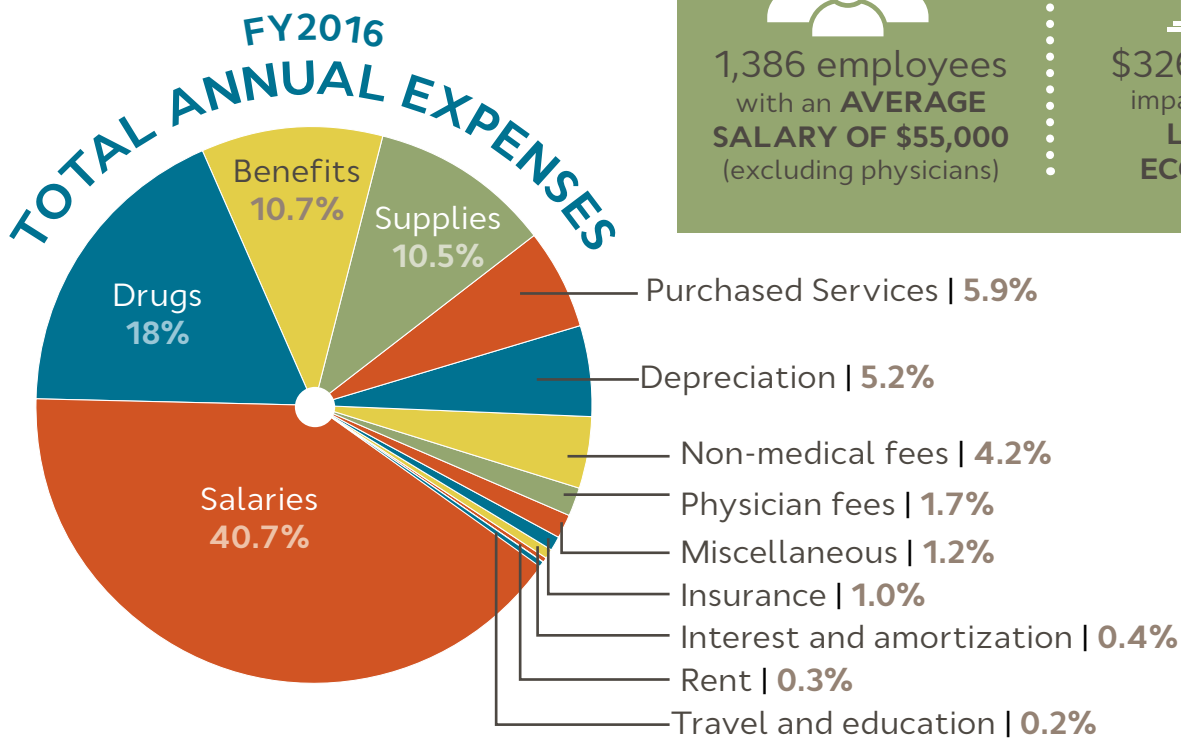
- St. Peter's **Family Fun Fest** attracted more than 2,000 participants in 2016, including 750 youth and their families to a Centennial Park fun run ending with a health fair in the Great Northern Town Center.
- St. Peter's **Spring Wellness Event** featured physician talks on colorectal health, free wellness screenings, educational displays with St. Peter's nurses, and a delicious, fiber-rich "superfood" breakfast for attendees.
- St. Peter's offers **year-round courses** on first aid, CPR, childbirth, breastfeeding, parenting, babysitting, tobacco cessation, diet and fitness.

BENEFIT TO THE COMMUNITY (FY2016)

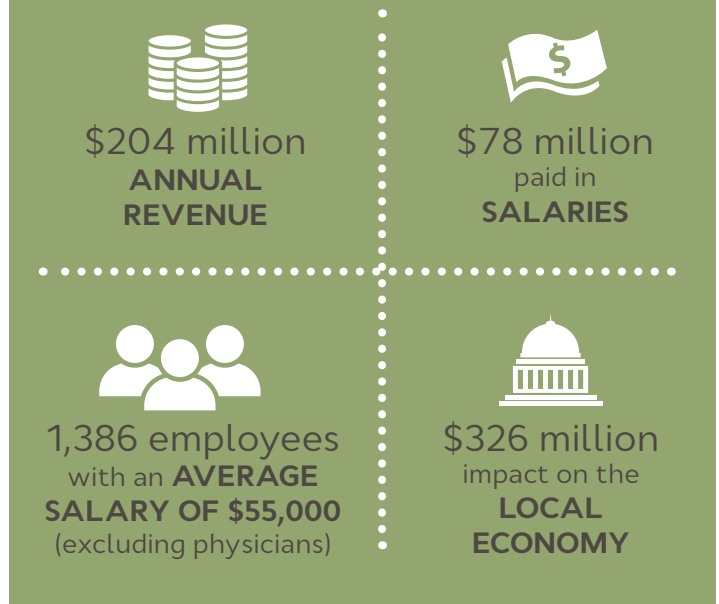


CASH & IN-KIND DONATIONS

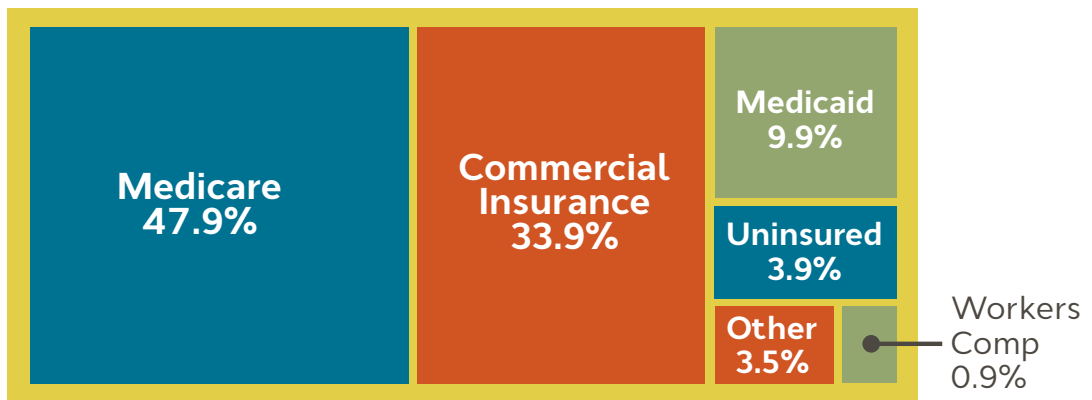
St. Peter's supports other organizations and initiatives that share our goal to improve the health of our community. In 2016, that included cash donations to organizations focused on the health, social, cultural and educational needs of our region. In addition, St. Peter's staff donates time, materials and leadership to more than 30 community groups, including various schools, Helena Area Chamber of Commerce, Helena Education Foundation, Rocky Mountain Development Council, The Friendship Center, Helena YWCA and others.



ECONOMIC IMPACT OF ST. PETER'S



REVENUE PAYOR MIX (FY2016)



Where We've Been:

2016 ACCOMPLISHMENTS

St. Peter's made significant progress in 2016 toward continuous improvement across service offerings and sharpening our focus on quality, accessible care.

CHRONIC PAIN CLINIC

Over 1,000 St. Peter's patients suffer from chronic pain. Our new chronic pain clinic provides patients with a dedicated, specialized care manager, which leads to improved overall care and increased life satisfaction.

COMMUNITY HEALTH IMPROVEMENT PLAN

Together with Lewis and Clark Public Health, St. Peter's engaged nearly eighty community stakeholders in the development of a three-year plan to improve the health of our community. Drawing from the findings of our 2015 Community Health Needs Assessment, we prioritized the health needs facing our community, identified measurable goals, and developed evidence-based strategies to address the following key areas: mental health, substance abuse, chronic disease, communicable disease, maternal and child health, environmental health and injury, and access to care.



St. Peter's Dialysis Center was the only center in Montana to be ranked Five Stars by the Centers for Medicare and Medicaid Services in 2016.

NEW AND IMPROVED BILLING SYSTEMS

When our community told us we needed to improve our billing system, we set out to find a solution. Our completely redesigned billing system improves accuracy and convenience for our patients through new technology and easy-to-understand statements. In fact, we changed our entire approach to the billing process—now, we provide patients with a financial counselor, explain costs, and estimate what insurance will cover before the service

even occurs. Our financial counselors work closely with patients to identify payment sources and develop individualized payment plans, like the 0% interest, long-term loan program launching later this year, to ensure cost is never an obstacle to receiving care.

EMERGENCY SERVICES

St. Peter's ambulances are always on call—for emergencies, medical transport to other facilities, and on standby for community events—and travel thousands of miles each year across our five-county service area. In 2016, St. Peter's Hospital Foundation raised over \$400,000 to add two new ambulances and update existing medical equipment across our fleet. Our ambulances help us provide the best possible outcomes for patients experiencing medical emergencies.

LINEAR ACCELERATOR

St. Peter's invested \$4 million to replace the existing linear accelerator with a state-of-the-art Varian TrueBeam system, making treatment options near home possible for the majority of cancer types, including lung, breast, prostate, head and neck. One of only two in the state, our TrueBeam linear accelerator delivers significantly more precise radiation therapy, with accuracy down to the millimeter, which results in more effective cancer treatments and reduced side effects. Its unique integration of advanced imaging and motion management technologies also makes it possible to deliver treatments more quickly while monitoring and compensating for tumor motion. Our largest facilities project in 2016, St. Peter's constructed an additional vault to house the new machine so the existing linear accelerator could remain in service instead of halting treatment while the transition took place. The investment in a second vault will continue to pay dividends when future technologies are acquired for St. Peter's Cancer Treatment Center.



▲ In 2016, St. Peter's Hospital Foundation raised over \$400,000 to add two new ambulances to our fleet and update existing equipment.

The goal of CPC+ is to improve the quality of care patients receive through a team-based approach with a focus on preventative care. ▼



Where We're Going:

OUR 2017 PRIORITIES

At St. Peter's, we're working hard to align our priorities with the most pressing needs of our patients and community.

We develop and regularly review every program, service, technology and offering through the lens of how it will benefit and impact our community and the patients we serve.

ENHANCED URGENT CARE CLINIC

Over the past five years, St. Peter's has seen a 41% increase in usage of the urgent care clinic on our hospital campus. To meet this growing need, we have expanded the clinic. The first phase of expansion, completed in early 2017, added examination rooms and a triage room for patients with more serious conditions. The second phase of the expansion, also completed in 2017, improves workflow and increases the work areas for care providers.

CPC+ NATIONAL PILOT PROGRAM

Comprehensive Primary Care Plus (CPC+) is a new patient-centered primary care model that gives caregivers and patients the resources to collaboratively manage the patient's overall health with a focus on preventative care, instead of the traditional reactive approach to treating singular health issues. The patient's relationship with their St. Peter's doctor will not change—instead, the patient's health care support system will expand into a multi-disciplinary team of clinical experts that coordinates care across the "medical neighborhood." St. Peter's is implementing this new model in our primary care clinics throughout 2017.

St. Peter's is ranked a **Top 100 Rural & Community Hospital** in the United States by iVantage Health Analytics.



Where We're Going:

OUR 2017 PRIORITIES

RADIATION ONCOLOGY

As St. Peter's continues to expand the range of cancer treatments offered right here in our own community, we began a multi-year remodel of our Radiation Oncology clinic to accommodate our growing number of patients. St. Peter's Cancer Treatment Center has also seen an increase in patients over the past several years, with more projected due to the community's aging population.

Receiving treatment for cancer is a trying time, and can present both emotional and logistical challenges for patients and their families. The chief goal of this project is to make the process of receiving treatment as seamless and as comfortable as possible:

- **Improved patient comfort** during clinic visits with a more aesthetically-pleasing, healing environment.
- **An increased number of exam rooms** to allow for rooms dedicated to specific types of cancer. These rooms will contain specific equipment needed for examination of different parts of the body.
- **Private waiting areas** for patients before and after treatment to enhance personal privacy.
- **Centralized patient care teams**—including the physician, care manager, advanced practitioner, nurse navigator, social worker and financial counselor—instead of members of the care team located in various areas throughout the hospital.



BY THE NUMBERS:

3,000+ PATIENTS are seen in our oncology department each year

Last year, patients visited the Cancer Treatment Center a total of nearly **19,000 TIMES**



ENDOSCOPY SUITE

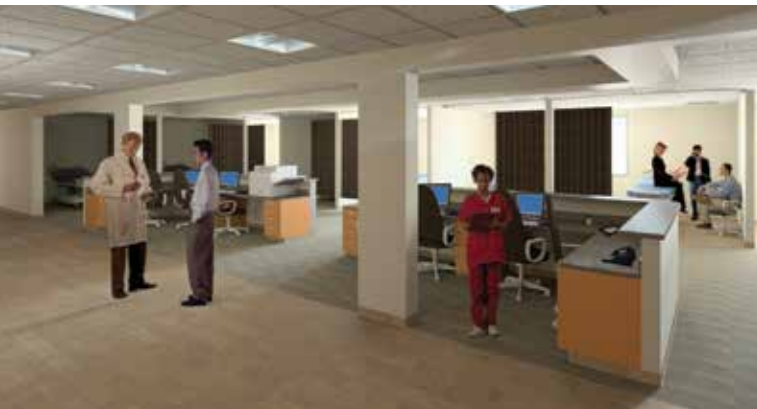
Here at St. Peter's and throughout the nation, the idea of health care is changing. It is no longer just for emergencies, but a lifelong goal, shifting focus from "getting better" to "being healthy." Preventative care is taking a central role.

This year, the St. Peter's Foundation is raising funds to help expand Endoscopy Services at St. Peter's.

The community need for endoscopy exceeds our capability to provide these procedures. Currently, endoscopy procedures like colonoscopies and upper gastrointestinal (GI) scopes are performed in a three-room

suite in Same Day Services. While these suites are used primarily for performing GI procedures, they are also used by others for interventional procedures. We perform an average of 21 endoscopy procedures each day, with nearly 4,400 performed each year. Yet the projected community need for colonoscopies is an additional 2,000 per year. With this limitation, we can't reach everyone in our area that needs to be screened—and for those we do serve, the wait time to schedule a colonoscopy is anywhere from one and a half to seven months.

The expansion of the Endoscopy Suite at St. Peter's Hospital will increase our capacity to perform screening colonoscopies with five rooms of dedicated space, so patients won't need to worry about another procedure delaying their own. The project will also help patients navigate the facility by centralizing the Endoscopy and Same Day waiting rooms to a more accessible area for patients.



The Endoscopy Suite, planned for completion in the Fall of 2017, will allow St. Peter's to perform nearly 2,000 additional colonoscopies each year to screen for cancer.

No one should have to wait for potentially life-saving screenings. And with your help, they won't need to. To make a gift towards the \$2.5 million needed, please call (406) 444-2370 or visit stpetes.org/donation.

DID YOU KNOW?

#2

Colorectal cancer is the second leading cause of cancer-related death in Montana.

66%

Among adults 50-75, only 66% in St. Peter's five-county service area have had an appropriate colorectal cancer screening.

49th

Montana ranks 49th in the United States for colorectal cancer screening among adults age 50 years and older.

60%

Increased access to screening and early detection can reduce mortality rates by as much as 60%, and save many lives.

Investing In

YOUR HOSPITAL & HEALTH CARE SYSTEM

St. Peter's invests approximately \$8–10 million per year in capital improvements such as new equipment, facilities and technology infrastructure. This is a strong affirmation of our commitment to providing the best possible care for our community and to our not-for-profit, community-owned model. **Our “profits” are reinvested to improve the quality of care we offer, not distributed as dividends to shareholders.** The return-on-investment: a healthier community for us all.



AMBULANCE
\$384,605 (2015, 2016)

Two new ambulances—with better lighting, expanded storage, and a new hydraulic-assist cot lift—help ensure the best possible outcomes for patients experiencing medical emergencies.

CANCER TREATMENT CENTER
\$956,000 (2015)

State-of-the-art CT/PET scanner better detects cancer in early stages, when cancer has the highest cure rates.

ENDOSCOPY SUITE
\$2,530,400 (2017)

Construction of a new, dedicated endoscopy department to increase our ability to perform life-saving procedures like colonoscopies.

WOMEN & CHILDREN'S UNIT
\$508,000 (2015)

“Panda” and “Giraffe” baby warmers enhance the care of premature babies and infants who need intense medical treatment.

URGENT CARE
\$223,344 (2016)

Relocation and renovation increased the number of exam rooms, improved accessibility and enhanced the patient experience by improving workflow.

CANCER TREATMENT CENTER
\$2,864,072 (2016)

TrueBeam linear accelerator provides the most precise radiation therapy treatment available, shortens treatment times and reduces side effects for patients.

RADIATION ONCOLOGY
\$1,100,000 (2017)

An extensive remodel to meet the demand of increased patient numbers and to provide more private and comfortable treatment areas.

SAME DAY SERVICES
\$585,568 (2015)

New endoscopes allow physicians to visually examine organs and are used in procedures like colonoscopies.

WOMEN & CHILDREN'S UNIT
\$96,000 (2015)

Renovations and new technology ensure the safety and security of newborns and children in St. Peter's care.

DIAGNOSTIC IMAGING
\$676,000 (2016)

MRI machine upgrade provides the most advanced imaging available in the Helena region.



WHO WE ARE:

PHYSICIANS AND PROFESSIONAL STAFF

The Helena region is fortunate to have exceptional physicians and staff representing over 30 different specialties in both large multi-specialty clinics and small clinics across our community. As a community hospital, St. Peter's is home to both our employed physicians as well as independent physicians. We have approximately 109 local physicians who meet the rigorous requirements to become a member of St. Peter's medical staff, which grants them privileges to practice medicine and care for their patients at the hospital. Approximately half of the physicians with privileges at the hospital are independent physicians with their own private practice.

We believe it's our responsibility to identify and address the community's health care needs. Access to quality, local-based care is an issue in our community, and St. Peter's has committed to recruiting more than 30 new physicians across specialties to help improve patient access to care.

EMPLOYED PHYSICIANS & PROVIDERS

More information is available at stpetes.org/find-a-doctor

ST. PETER'S MEDICAL GROUP BROADWAY CLINIC

Allergy, Asthma & Immunology

Summer Monforte, M.D.
Danielle Redfield, F.N.P.

Audiology

Kelly Marrinan, Au.D.

Cardiology

Sarah Fenton, M.D., F.A.C.C.
Kris Godlewski, M.D., F.A.C.C.
Britt Ballinger, F.N.P.

Ear, Nose & Throat

Michael Dixon, M.D.

Endocrinology

Brian Robinson, D.O.

Family Medicine

Jessica Bailey, M.D.
Andrew Gilbert, M.D.
Diane Nowak, M.D.
Todd Wampler, M.D.
Melissa Bentley, F.N.P.
Beverly Roope, F.N.P.
Lanae Williams, P.A.

Family Medicine & Obstetrics

Jenifer Dodge, M.D.
Chelsey Field, D.O.
Sara O'Connell, M.D.

Gerontology

Kristen Jaster, G.N.P.

Infectious Disease

Donald Skillman, M.D.

Internal Medicine

Tracy Dill, M.D.
Nicole Todorovich, F.N.P.

Orthopaedics

E. Patrick Curry, M.D.
Kerry Hale, M.D.
Lena Phelps, P.A.

Psychiatry

Mark Mozer, M.D.

Nephrology

Robert LaClair, M.D.

Neurology

Nicole Clark, M.D.
Elize Cline, F.N.P.

Rheumatology

Carolyn Coyle, M.D.

Urology

Tim Grossman, M.D.

ST. PETER'S MEDICAL GROUP NORTH CLINIC

Family Medicine

Bill Batey, M.D.
Kiley Kirksey, M.D.
David Krainacker, M.D.
Laura Bennett, P.A.
Sara Juers, P.A.
Leslie Wilson, F.N.P.

Family Medicine & Obstetrics

Katy Wessel, D.O.

Gastroenterology

J. David Bohler, M.D.
Michael Lee, M.D.
Carissa Bergman, F.N.P.
Kari DeBoo, F.N.P.



EXCELLENCE IN CARE

Surviving a heart attack requires rapid response and St. Peter's has consistently been recognized for our premier training and procedures in rapid heart attack treatment. Using the American Heart Association's best practices guidelines, St. Peter's implements acute Segment Elevation Myocardial Infarction (STEMI) care procedures, which result in improved outcomes for patients experiencing life-threatening cardiac emergencies.

Urgent Care

Earl Book, M.D.
Inna Bordewick, P.A.
Tiffany Lamping, P.A.
Carla Mull, P.A.

ST. PETER'S HOSPITAL

Cancer Treatment Center

Andrew Cupino, M.D.
Thomas Weiner, M.D.

Hospitalists

Anne Anglim, M.D.
Ashley Basten, D.O.
Rodolfo Choussal, M.D.
Lee Harrison, M.D.
Mark Kreisberg, M.D., F.A.C.P.
Stephen Mest, M.D.
Tristan Seitz, M.D.
Lee Travis, M.D.
Margaret Schaefer, N.P.

Interventional Radiology

Bradley Dick, M.D., F.A.C.R.

Radiology

Chris Gabel, M.D.
Peter Pop, M.D.
James Tarver, M.D.

Surgery

Alissa Abentroth, M.D., F.A.C.S.
Emily Bubbers, M.D.
John Galt, M.D., F.A.C.S.
Dana Osborne, M.D.

NEW PROVIDERS HIRED IN 2016-17

ST. PETER'S MEDICAL GROUP BROADWAY CLINIC



Betty Plate, M.D.
Family Medicine
& Obstetrics



Katie Chappell, F.N.P.
Internal
Medicine



Sharla Dosier, N.P.
Orthopaedics



Trapper Hogberg, P.A.
Orthopaedics



Mark Kishbaugh, P.A.
Family
Medicine



Adam Plate, M.D.
Emergency
Medicine

INDEPENDENT

ST. PETER'S MEDICAL GROUP NORTH CLINIC



Bill Batey, M.D.
Family
Medicine



Emily Hedum, D.O.
Family
Medicine



Ashley Berkram, P.A.
Family
Medicine



Wade Holden, P.A.
Urgent
Care



Char Lewis, F.N.P.
Pain
Management



Tanya McCullough, A.N.P.
Pain
Management

ST. PETER'S HOSPITAL



Sarah Evans, M.D.
Plastic Surgery



Rob Smith, D.O.
Hospitalist



Donita Mariegard, F.N.P.
Hospitalist

STARTING IN 2017

Ben Atwater, M.D. – Pain Management
Mikael Bedell, M.D. – Family Medicine
Paul Eodice, D.O. – Family Medicine
Chris Lindsay, M.D. – Radiology
Brandon Newgard, M.D. – Interventional Radiology
Carolyn Meyer, M.D. – Emergency Medicine
Andrea Mow, D.O. – Psychiatry
Justin Perry, M.D. – Family Medicine
Jared Phelps, D.O. – Emergency Medicine
Abigail Mertz, A.N.P. – Family Medicine
Ruth Mollet, F.N.P. – Gastroenterology

INDEPENDENT PHYSICIANS

Anesthesiology

David Boggs, M.D.
 Michael Mondloch, M.D.
 John Mott, M.D.
 Joe Murphy, M.D.
 Jeanne Sticht, M.D.
 Ben Swoboda, M.D.
 Duane Thomas, M.D.
 Bill Tonidandel, M.D.

Cardiology

Richard Paustian, M.D., F.A.C.C.

Dermatology

Stephen Behlmer, M.D., F.A.A.D.

Emergency Medicine

Andy Coil, D.O.
 William Gallea, M.D.
 John Horning, M.D., F.A.A.E.M.
 Trent Jensen, D.O.

Tiffany Kniepkamp, M.D.

Doug Kuntzweiler, M.D.

Andrew Michel, M.D.

Ear/Nose/Throat

Scott Pargot, D.O.
 Nathan Sanders, D.O.

Family Medicine

Holly Hoffman, M.D.
 Heather McRee, D.O.
 Saul Rivard, M.D.
 William Snider, D.O.

Internal Medicine

Jean Justad, M.D.

Nephrology

Gwen Pincomb, M.D.

Ophthalmology

Thomas Berbos, M.D.

Oral Surgery & Dentistry

Matthew Coplin, D.M.D.
 Quinn Erwin, D.D.S.
 Mari Kiesling, D.M.D.
 Kevin Rencher, D.D.S.

Pain Specialist

Matthew McLaren, M.D.

Pathology

Don Schultz, M.D.

Pediatrics

Teresa Augustine, M.D.
 Michelle Danielson, M.D.
 Blayne Fritz, M.D.
 Erin Keefe, M.D.
 Kari Loomis, M.D.
 Michael Palcisko, M.D.
 Callie Riggan, M.D.
 Tom Strizich, M.D.
 Venus Villalva, M.D.

Podiatry

Anthony Quebedeaux, D.P.M.
 Jason Smith, D.P.M.

Obstetrics/Gynecology

Michael Hay, M.D.
 Maria Huntley, M.D.
 Andrew Malany, M.D.
 Jack McMahan, Jr., M.D.

Orthopaedic Surgery

Erik Bergquist, M.D.
 Peter Hanson, M.D.
 B. Max Iverson, M.D.
 John Michelotti, M.D.

Physiatry (Rehab Medicine)

Allen Weinert, Jr., M.D.

Surgery

William Harper, M.D.

ST. PETER'S HOSPITAL FOUNDATION

Dear Friends,

Thank you for your generous support of St. Peter's Hospital Foundation in 2016. Because of you, the Foundation was able to **PROVIDE DIRECT ASSISTANCE TO OVER 550 FAMILIES** experiencing medical emergencies with items such as travel funds, discharge medications, special equipment and much more. We were also able to provide indirect assistance to families needing help with cardio-pulmonary rehab, Lifeline and hospice care. Your generosity also provided the resources necessary to replace two emergency response vehicles in an aging and heavily-used fleet. This ensures that when the life-saving help of our emergency responders is needed, they will be there to help. From the bottom of our hearts and on behalf of all of the patients and families that have been impacted, **"thank you."**

In 2016, we began a new chapter of leadership for St. Peter's Hospital Foundation with the **APPOINTMENT OF KARIN OLSEN TO EXECUTIVE VICE PRESIDENT** in November. Karin's experience in philanthropy, her passion for stewardship and her strategic leadership have already had a strong positive impact and will be of tremendous value in the years to come. Karin's arrival has allowed the Foundation Board to take a fresh look at the many successes, opportunities and needs of the Foundation in furthering quality health care in the Helena region. If you haven't met Karin yet, I am confident you will have that opportunity very soon.

This year, SPHF will continue to elevate the quality of health care in Helena by **RAISING FUNDS FOR THE EXPANSION OF THE ENDOSCOPY SUITE**. This will address a major accessibility issue, as a recent evaluation of

community health care needs uncovered that nearly 1,100 patients—or 20% of the total endoscopy needs of our community—had to leave the Helena area to have endoscopy procedures performed. This was not because the procedures could not be done in Helena or the patient chose to go elsewhere—it's because the wait time was weeks, and in some cases, months. By expanding our endoscopy suite, we will dramatically reduce wait times so our patients can receive timely health care from the providers they know and trust. (Read more about this project on page 11.)

Finally, I want to recognize and **THANK OUR OUTGOING DIRECTOR OF ANNUAL GIVING, DORIS ROMANISKO**. Doris has been critical to the Foundation's success for the last 15 years by helping patients, building relationships with our many generous benefactors, and mentoring new staff at the Foundation. Over the past two years, Doris has served as the Interim Director of St. Peter's Hospital Foundation, seamlessly carrying on our events and day-to-day operations and helping us to care for our community without exception. With Doris, health care in the Helena community has excelled. For her good humor, sincere heart and leadership, we thank Doris and wish her the very best as she embarks on her well-deserved retirement.

Thank you,



Randy Riley, Chair
St. Peter's Hospital Foundation Board of Trustees



FOUNDATION BOARD OF TRUSTEES



Kevin McCutcheon
Chair Elect
Payne West
Insurance



Philip Howeth
Treasurer
Stockman Asset
Management



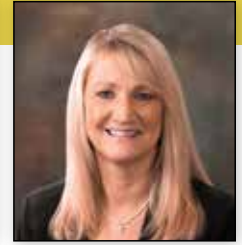
**Alissa
Abentroth, M.D.**
Surgeon
St. Peter's Hospital



**George
"Russ" Bell**
Community Member



Arlene Mathews
St. Peter's Hospital
Association



Ronda McMillan
Montana
Health Co-Op



**Michael "Mick"
Mondloch, M.D.**
Anesthesiologist
St. Peter's Hospital



**Kari Parmer,
R.N.C., M.S.N.**
St. Peter's Cancer
Treatment Center



**Pamela
Schindler**
Community Member



Karin Olsen
St. Peter's Hospital
Foundation



Fred Olson, M.D.
St. Peter's Interim
President & CEO

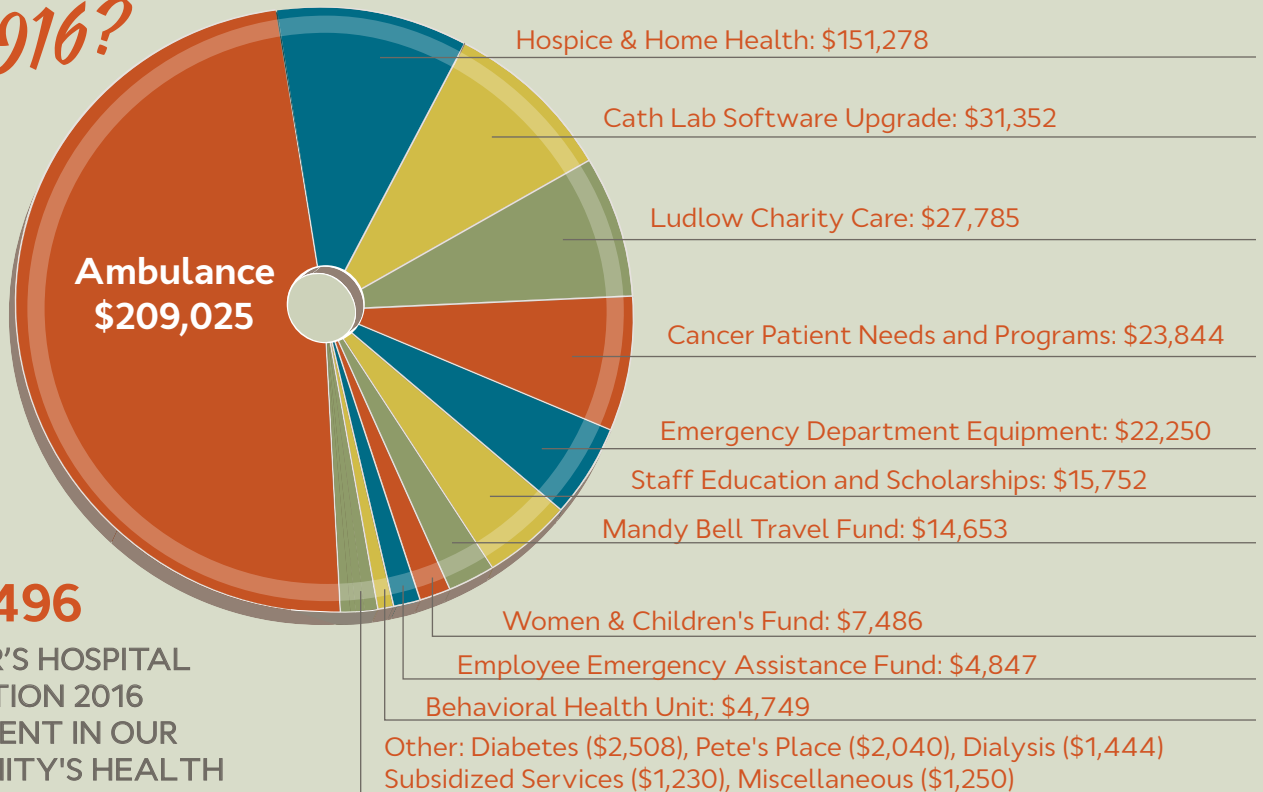
NEW ADDITIONS TO THE BOARD:

Kristin Kerr
Big Sky Brokers

Pete Johnson
President,
Opportunity Bank

Steve Schroeder
Varian Medical
Systems

*Where did your donations
go in 2016?*



\$521,496

ST. PETER'S HOSPITAL
FOUNDATION 2016
INVESTMENT IN OUR
COMMUNITY'S HEALTH

FOUNDATION STAFF



Karin Olsen
Executive Vice
President



Melissa Lutgen
Director of
Annual Giving



Cheri Matthes
Receptionist/
Data Entry

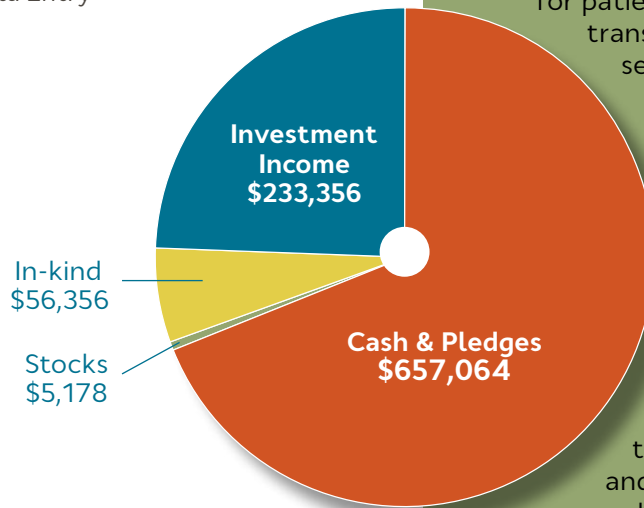


Amy Maracle
Grant Writer

Building the foundation to give

Some of the funds St. Peter's Hospital Foundation raises annually are set aside for future growth in our endowment, to be put towards cash and pledges for programs and capital projects not yet funded by the Foundation to St. Peter's Hospital.

ST. PETER'S HOSPITAL
FOUNDATION 2016 REVENUE: **\$951,954**



Providing care that wouldn't otherwise be there.

Established in 1978, St. Peter's Hospital Foundation is responsible for managing the philanthropic contributions to St. Peter's Hospital. The Foundation works diligently to improve patient care by supporting a wide range of needs including new ambulances for patients' emergency transport, major service expansions and facility renovations. Over the past four decades, our patients, their families and other friends of the Foundation have generously donated more than \$27 million and served countless volunteer hours for St. Peter's Hospital.

THANK YOU CORPORATE SPONSORS

Businesses and community partners throughout Helena contribute to our work in the form of sponsorships and gifts. This support allows St. Peter's to provide quality care to those in our community who may not otherwise be able to afford it. We are grateful to have strong partners in our community who value and support our mission.

Merrill Lynch, Anderson-Hedge-Wagner Team
Montana Marketing, Inc.
Opportunity Bank of Montana
PacificSource Health Plans
Payne West Insurance
Wipfli, LLP

Premier 15 Sponsors

\$15,000

Blue Cross Blue Shield of Montana

Premier 10 Sponsors

\$10,000 TO \$14,999

Cherry Creek Radio – Helena
Montana Radio Company
Wells Fargo Bank Montana, NA

Premier 7.5 Sponsors

\$7,500 TO \$9,999

ABC Montana/FOX Montana

Premier Sponsors

\$5,000 TO \$7,499

Anderson ZurMuehlen and Co., P.C.
Dick Anderson Construction, Inc.
First Interstate Bank of Helena
Helena Community Credit Union
Montana Television Network
Mountain West Office Solutions –
Authorized Xerox Agent
St. Peter's Hospital Behavioral
Health (Horizon)
Valley Bank of Helena

Major Sponsors

\$3,000 TO \$4,999

Eaton Turner Jewelry
KGR 680AM & 93.1FM Radio

Special Sponsors

\$1,500 TO \$2,999

Allegra Marketing-Print-Mail
Browning, Kaleczyc, Berry,
and Hoven
Centron Services
Helena Independent Record
McLean & Associates, PLLC
Rocky Mountain Healthcare and
Big Sky Healthcare Communities
Slate Architecture
Tri-County Mechanical and Electric

Supporting Sponsors

\$1,000 TO \$1,499

The Cat Rental Store (T&E)
Robert Peccia and Associates
Sears Hometown Helena Store
Tom's Crane

Thank You!

2016 LEGACY OF LIFE MEMBERS:

William E. Allen, Jr. and
Pauline K. Allen
Dr. Chuck Anderson and
Lana Anderson
Margaret and Dick Anderson
Anonymous Donors
Dianne Armstrong
Kenneth Austad
Jean and William Barrett
Wally and LaDonna Bell
David F. Bluck

Dr. V. Lee Harrison
Dr. Tom and Martha Hawkins
Jane G. Hibbard
Mrs. Joan T. Holter
Alden P. Howell
Philip and Joann Howeth
Marilyn T. Hudson and
Robert G. Maxwell
Anne M. Intini
Dr. Dale and Susan Johnson
Franklin Q. and Ruth Ann Johnson

Michael Munck and
Betsy Pennington
Aidan S. Myhre
Joseph and Roxie Nistler
Tami and Wayne O'Brien
Gloria M. O'Connell
J. Andrew O'Neill and
Donna M. O'Neill
Nathan C. and Kristin L. Olson
Dr. Scott Pargot
Dr. Terri Pargot

Legacy of Life

St. Peter's Legacy of Life (formerly Second Century Club) is composed of those who have set up a permanent endowment, charitable trust, annuity or made bequests in their will to benefit our region's health. These gifts help ensure St. Peter's *Legacy* of exceptional and compassionate health care.

Raymond D. and Joyce F. Brown
Dr. James N. Burkholder and
Kathleen J. Zarndt
Candie Cain
Theodore P. Carkulis
Kenneth C. Carpenter
Lorna R. Carroll
Doris S. Casebolt
Teresa L. Clopton
Becky Bates Vinson Coldiron
Frank and Mary Ellen Cooney
Mary Jane Davidson
John and Katy Delano
Ila B. Dousman Fund
Larry and Kathy Dreyer
Dr. Ken and Elizabeth Eden
Karrie Fairbrother
Dr. Edna M. Fordyce
Elaine M. Fordyce
William S. Gallea, MD
Lyle A. Gibbs
G. Jean Gilbert
Kenneth Givens
Col. Joseph and Leila Goldes
John and Susan Green

Vernon 'Pat' L. Jones
Agnes LaRue
Blanche Judge
Beryl B. Kaiserman
Bert and Carol Kane
Ruth A. Kendall
Robert Kjos
William and Rena Korizek
Ludlow and Patricia Kramer
Douglas L. Kuntzweiler, MD
Don and Shelly Laine
Mary 'Agnes' LaRue
Lorretta Lynde and Robert Fusie
Everett and Wanda Lynn
June Mackin
Kenneth W. Marin
Bob and Barb Marks
Joseph and Patricia Mazurek
Dan and Marcy McLean
Jack McMahan, Jr., MD
Dr. and Mrs. J.W. McMahan, Sr.
James 'Bud' McMaster
Stephen and Christina Mest
Cleo Moran
Dr. R. Wynne Morris Trust

Howard and Michele Pederson
Charles and Mary Phelps
Bill and Nancy Pierce
Rick Pyfer
Margaret C. Quinn
Lance and Bette Jo Redden
R.B. and Pearl P. Richardson
Randy and Lisa Riley
Mathew and Maureen Rude
Madeline Samson
John and Idamae Schack
Eric and Pamela Schindler
Arthur J. Seiler
Dr. John and Luanne Smith
Christine and Richard Snyder
John and Maria Solheim
William M. and Barbara J. Spilker
Dave and Carol Stahly
Dan and Mary Ann Sullivan
Jacqueline Terrell Lenmark
Dorothy Margaret Thayer
Wally and Fran Waddell
Arthur T. Ward Trust
James and Carol Williams

To become a member of the Legacy of Life Society, simply advise the Foundation Office of your intention to make a planned gift to St. Peter's Hospital by contacting (406) 444-2370 or foundation@stpetes.org.

THANK YOU DONORS

GIFTS RECEIVED IN CALENDAR YEAR 2016:

SPECIAL BENEFACTORS \$25,000 AND UP

Estate of David F. Bluck
Richard Gardiner
Estate of Martha A.
Hawkins

SPECIAL BENEFACTORS \$10,000 TO \$24,000

The G. Russell and Sharon
A. Bell Foundation
E. Phil Maronick
R.B. and Pearl P. Richardson
Trust
St. Peter's Hospital
Association
Estate of Madeline Samson

SPECIAL BENEFACTORS \$5,000 TO \$9,999

Anonymous
Montana Community
Foundation
**St. Peter's Employees EEF
Donors**
Dr. John and Luanne Smith

SPECIAL BENEFACTORS \$1,000 TO \$4,999

Anonymous (2)
Wally and LaDonna Bell
Broadwater Rodeo and Fair
Association
C.R. Anderson Middle
School
Capital High School
Volleyball Team
Nathalie Caulliez
Coeur D' Alene Resort
Laurie C. Dalin
Dr. Michelle and Cody
Danielson
Karrie Fairbrother
Rich Falconer
John and Kelly Galt

Leila Goldes
John and Susan Green
James and Theresa
Hamilton
Mary E. Hanson
Dr. William J. Harper and
Ann Lansing, CRNA
J. Daniel Hoven
Alden P. Howell Trust
Philip and Joann Howeth
Marilyn T. Hudson
Douglas Hughes
Jester's Bar Dart
Tournament
Cordell Johnson and
Kay Mathews
Estate of Ruth Ann 'Rudy'
Johnson
Linda K. Johnson
Jahna and David Jurenka
Gale and John Kuglin
**Rob LaClair, MD and
Melanie LaClair**
Last Chance Chapel Inc.
Lewis & Clark Emergency
Physicians – Andy Coil,
DO; Williams S. Gallea,
MD; John Horning, MD;
Trent Jensen, DO; Dr.
Tiffany Kniepkamp;
Douglas L. Kuntzweiler,
MD; Dr. Andrew Michel
Arlene F. Mathews
**Steve and Cheri Matthes
and Family**
**Paul and Orpha
Montgomery**
Carol Novotne
Tami and Wayne O'Brien
**Ted Lanier and
Heather M. O'Hara**
Nathan C. and Kristin L.
Olson
Kari and Randy Parmer
Kevin and Mary Pitzer
Randy and Lisa Riley
**Doris Romanisko and
Doug Schill**
Col. Leon G. Schneider Ret.
State Employee's
Charitable Giving
Campaign
**Daniel and Mary Ann
Sullivan**
Dee and Mike Trombetta

BENEFACTORS \$500 TO \$999

Bad Betty's BBQ
Ashley Basten
Debbie and Bill Berg
Big Sky Acoustics, LLC
Bob and Starla Blank
Raymond D. and Joyce F.
Brown
Chili O'Brien's Catering
Iris Danielson
Tom and Betty DeYoung
**Dr. Michael Dixon and
Mary Dixon**
Emmert Family
Fire Guys Leasing, Inc.
Rosalie A. Frank
Ginny Frankenfield
R. Brian and Blair Haseman
Marjean Heisler
Helena Photography
Karen and Garry Hicks
Holland America Line
Anthony Huot
Dale and Kathleen Kennedy
Sue and Jay Larson
Caroline Leavitt
Rebecca J. Lund
Melissa and Justin Lutgen
Teresa Martenson
Jim and Vida Melstad
Stephen and Christina Mest
Chris and Marcia Miller
Amanda Moe
**Fletcher and Karen
Mulvaney**
National Alliance of State
Pharmacy Associations
Alan and Nancy Nicholson
Maureen and Loren Oelkers
Katy and Tim Peterson
Sheila and Chuck Pewitt
Nancy and Bill Pierce
Scott and Missy Poortenga
Lance and Bette Jo Redden
Larry and Sheri Renney
Beryl and Maxine Rucker
**Vince and Michele
Serumgard**
Clifford Sheets
Tim, Dianna and Sarah
Sizemore
Heidi and Joe Thielen
Culver and Kathy Varnado

PATRONS \$250 TO \$499

Anonymous (2)
Dave and Angie Ashby
Avatar Realty
Mrs. William (Dianne)
Beaman
Donald C. Bendinelli
Books Are Fun LTD
Marie C. Brazier
Jim Brown
David and Gaynell Bruck
Candie Cain
Century Gaming, Inc
Clancy School and Students
Shirley Cleary and
Frank Cooper
Comfort Suites of Helena
Bobbie Conrady
Courthouse Lunch Bunch
Doris A. Crider
Bruce and Diane Dunham
Patient Access Accounts
Dean and Karen Flanagan
Dick Franz
Mary Beth and Dave
Garding
Kolene and Greg Gardner
Marlene Gleason
Vicki J. Gruber
Erin Hale
Colleen Beck Hallberg
Dr. Michael S. Hay
Rick and Jane Hays
Howard Heffelfinger
Helena Brewers
Helena Symphony
Sister Elizabeth Henry
Ralph and Billie Higgins
Craig and Rhonda Hinrichs
Home Depot
Rich Hopkins, MD
Erin and Michael Horstmann
Lois A. Hughes
Jim and Donnie Hultin
Dr. Dale and Susan Johnson
Deanna and Don Johnson
Pat and Noreen Johnson
Nan Klehm
**Dr. David Krainacker and
Nina Heinzinger**
Teresa and Jay Lightbody
Marci and Steve Lynn
Martin's Wines
Al Maulorico
Grace McCullough
Andrew and Melissa Moore
Glen E. Moore
Cleo Moran Endowment
Fund of the MT
Community Foundation

Candice Morris
 Jeff and Jeannie Morrison
 Michael Munck and
 Betsy Pennington
 Maggi Neal
**Dr. Fred C. Olson and
 Dr. V. Lee Harrison**
Cynthia Overturf
 Agnes E. Padbury
 Papa Murphy's Take 'N'
 Bake Pizza
 Catherine and Peter
 Petek III
 Charles and Mary 'Mike'
 Phelps
 Leslie Popiel
 Power Townsend Company
Marcy and Dave Reher
Robert and Jen Reinstadler
 Residence Inn Marriott
 Melanie Reynolds, and Bob,
 Maggie, and Sam Rowe
 Michele Rogan
Beverly Roope
 Mathew and Maureen Rude
Mary and Robert Runkel

SPONSORS
\$100 TO \$249

Michele Abney and
 Doug Moore
 Marika and Andy Adamek
 Bryce and Michiko Agnew
 Barb and Tom Albrecht
 ALPS Corporation
 Susan and Chris Ames
 Bernice and Bob Anderson
 Gary and Joan Anderson
 Michelle Anderson
Anonymous (7)
 Jeanie and Clarence
 Applegate
 Anne M. Applin
 Don and Mike Archibald
 Rick and Linda Ashworth
 Bunny Aumell
 Bill and Kathy Baertsch
 Michelle Baker
 Wm. G. and Helen A.
 Ballinger
 Marcia Ballowe
 Ed Bangs

Willard V. Bluck
 Cheryl Boid
 Kerry Bolmeier and
 Mike Bolmeier
Earl and Lisa Book
 Rick and Lynnette
 Boomgaarden
 Judy Bowen
 Katherine Boyle
 Stan and Glenda Bradshaw
 Robert and Marjorie
 Breden
 Brewhouse Brew Pub
 and Grill
 Susan M. Brookhart
 Gail Brown and Family
 James O. and Betty L.
 Brown
 Jim and Laura Brown
 Marie Brown
 Mary Jo Brown
 Matt and Audrey Brown
 Dick and Drea Brown
 Mary and Mark Bryson
 Helen Bunkowske
 Diane Burbank

Laurie Coverdell Hall
 Barb and Kevin Crabtree
 Susan and Russ Cravens
 Ryan and Amy Crawford
 and Family
 KayeD
 Jake, Mike and Michael
 Crennen
 Rose M. Crocker
 Phyllis M. Dagenais
 Patricia and Donald Dahl
 Mr. and Mrs. Dan Danielsen
 Bruce Davidson
 Mary Jane Davidson
 Patricia Davidson
 Lynda and Donald Davis
 Tom and Rita Davis
 Delano Family Fund of
 the MT Community
 Foundation
 Ronda DeMars McMillan
Lyanne Den Herder
 Dawn B. DeWolf
 Beth and Dustin Diteman
 Jim and Judith Dole
 Jeff and Linda M. Douglass

Barbara M. Downs
 Elizabeth U. Downs
 Alice C. Dritshulas
 Wendy Duensing
 Dunham Family
 Elaine Eidum
 Tom and Kay Morton
 Ellerhoff

John W. Elliott
 Karen Elliott
 Roger Engdahl
 Charlotte Eskildsen
 Charlotte and Kenneth
 Ewing
 Bill and Gay Eyman
 Fairmont Hot
 Springs Resort
 Marti J. Farris
 Bruce and Wanda Feddes
**Sarah Fenton, MD and
 Randal Rake**
 Ann Fifield and
 Mark Curlee
 Melvin and Arlene Fisk
 Chris Fitzpatrick
 Fred and Judy Flanders
 Carol Foote
 Four Georgians Students
 and Staff
 Ken and Corey Fox
 Emily Free Wilson
 Claudia Furois
**Charlotte Fuson and
 Bill Fleiner**
 Gale, LLC (Janet and
 Bud Gale)

*Our sincerest appreciation to those who help
 provide care that wouldn't otherwise be there.*

**St. Peter's Hospital
 Continental Cafe &
 Coffee Shop**
 Jerry Schillinger
 Donna Schroder
 Silverstar Steak Company
Karla Smith
Mary Stevens
 Jim and Sandie Stiffler
 Stockman Asset Mgmt/
 AnnaCo Investment
 Mgmt
 Dr. Thomas and Colette
 Strizich
 Peter Sullivan and
 Barbara Harris
 Kim and Bill Susag
 Marilyn Taylor
 Roger Thorvilson
 Rudy and Teresa Tomich
 Touchmark
 John H. Tuffli
 Marilyn Twichel
 Valley Sand and Gravel LLC
 Roy A. Wells
 Andrew J. Wirth
 Robert C. Wolverton

Alison Banikowski
 Marlene A. Barbour
 Dee A. Barfknecht
 Gloria Barrett
 Joseph J. and Margaret W.
 Barrett
 Glenn and Marjorie Barrows
 The Bartmess Family
 Joe and Helen Beausoleil
 Angela A. Behr
 Gordon Russell Bennett
 Benny's Bistro
 Elizabeth A. Bergstrom
 Leo and Lurie Berry
 Mike and Donna Bertram
 Best Western Great
 Northern Hotel
 Susan, Kyle, Calvin, and
 Adel Bigart
 Betty and Paul Bisom
 Dr. Roger E. Bisson
 Victor Bjornberg and
 Marilyn Richardson
 Lindsey and Brian Bjornson
 Ann R. Black
 Paula Blessinger
 Jeff Block

Katherine M. Burlinson
 Elizabeth Burns and
 Art Keeler III
 Bonnie J. Burton
 Ermel R. Campbell
 Steve R. Campbell
 Capital Sports and
 Western Wear
 Marilyn and Tom Carlin
 Dr. Thomas D. Carlin
 Randy and Connie Carlson
 Allen and Kathy Chambers
 Joyce and Kim Childs
 Marie Cipriano
 Robert Morse Clark
 Vi Clements
 Shelly and Pat Clinch
 Theresa B. Cloud
 Connie and David Cole
 Janet Colvin
 Margaret and Tom Colvin
 Peggy and Amber
 Connie Conley
Wendy and Kevin Cook
 Connie Cooper
 Tana and Tom Cooper
 Terry and Shari Copenhagen

Names in bold represent St. Peter's employees.

Sponsors (\$100 – \$249) Continued

George's Distributing
Beverly E. Gibson
Dollie M. Gilbert
John and Carol Gneckow
Mary Golden and Family
Dr. Jeff and Libby Goldes
Kenley and Mary Beth
Goodian
Nancy L. Goodspeed
Bo Gorsich
Grand Union Hotel
Grandstreet Theatre
Lynne and Paul Grant
Shari Gray
Allison Green –
Pampered Chef
Ruth and Fred Green
Lovania Gregory
Barbara and David Gross
Graham Haire

Daniel Jacques
Kathy and Doug James
Jefferson High School
Student Association
Deborah and Lee Johnson
Margaret K. Johnson
Mary I. Johnson
Patricia R. Johnson
Deborah W. Jones
Dick Kain and Family
Marie Kall
Nancy Barbara Kane
Bernard M. Keenan
Norma Jean and Keith Kelly
Kraig and Gina Keltz
Vickie Kemmerer
David and Jeri Kettman
Thom Kimbel
Mrs. Alice Kirn
John and Michele Klara

Mary Lou Mallette
Daniel L. Mansfield
DiAnne E. Mantz
Patty R. Marcil
Deacon Don Marks
Bob and Gay Ann Masolo
Jeannie and Doug Matthies
Brenda Maxwell-Bumann
Marilyn and Dave McClain
Duane McCullough
Pat and Colleen
McCutcheon
Jim and Kate McDonnell
Marjorie McGinley
Jim and Sandy McKeon
McMahon, Wall &
Hubley, PLLC
Mr. and Mrs. E. T. McMahon
Johno McMaster
Kay McOmber
Mark and Petra Meek
Patrick and Mary Jo
Mehrens
Katie and Keith Meyer
Quentin and Linda Miller
Mildred Miller
Shirley Miller
Tom and Kathy Miller
Phil and Karen Mills
Luella Mitton
Jeanette Modrow
Cyndee Moe
Montana Book and
Toy Company
Lou Moore and Hal Aasen
Doug and Sandy Morgan
and Family
Sara J. Morris
Sherry and Ken Morrison
Mary D. Munger
Carolyn Murgel
Roberta L. Murphy
Laurie and Kerry Neils
Mary and Jerry Nichols
Mary J. Nickel
Dianne Nickman
Helen Nielson
James and Mary Noel
Sheila and Rodger Nordahl
Barbara Nordstrom
John W. Northey
Barbara and Tom O'Connell
Patti O'Connell
Ernest O'Dell
Sherri Ohs-Mosley
Sue O'Leary
Karin J. Olsen
Shelley Olson – Mary Kay
Donald and Beverly Opitz
Jan Pallach
Blaine and Judy Palmquist
The Pan Handler Plus

Kelly Parsley and
Jeffrey Morris
Michael Patterson
Julie Peck
Christine Phillips
David and Barbara Pool
Richard and Neva Porte
Gene and Kathy
Prendergast
Mary and James Pullen
Ann Purcell and Mark Hoy
Pat Raymer
Kelly and Jody Reisbeck
Byron and Carla Roberts
Carol and Norman
Robertson
Janet and Fredric Robinson
Mick Robinson
Rocky Mountain Law
Partners, PLLP
Joan Rolling
Paula Roman
Ronda and Duane Roope
Lori and Bob Rowe
Ben and Michelle Rush
Susan and Bob Russell
John A. Ryan
Sacajawea Hotel
Pam Sasser
Berma Saxton
Pete and Marilyn Schendel
Wanda Schlosser
Erwin and Barbara Schock
Margaret Semola
Joseph F. and Cherie L.
Shevlin
Gayle Shirley
Marge Short
Susan Epstein and
Spencer Shropshire
Charles R. Siefert
Lorraine Skaalure
Rosana and Dewey Skelton
Kimmy Skiftun and
A.L. Skiftun
Lillian M. Smalley
C. E. Vicki Smith
Richard and Christine
Snyder
Janet Sperry
Preston and Ruth Spruill
Dorothy 'Dot' J. Spurlock
Stahly Engineering &
Associates
Dave and Carol Stahly
Ed and Sue Standley
Margie Stanger
Starz on Stage Productions
Sharlene Stav
Carol M. Stebbins
Steffano's U Bake Pizza &
Sub Shoppe

EXCELLENCE IN CARE

St. Peter's Women & Children's Unit has the highest Composite Quality Practice Score among all hospitals in Montana and the nation for our maternity practices in infant nutrition and care.

William H. Hanson
Dale Harms
Rev Joseph D. Harrington
Barbara Harris
Ann Harris
Mary M. Hartman
Bill and Gretchen Hedge
Brian and Linda Heeney
Sharon Heigh
Barrie L. Heinecke
Chris and Margaret Herriges
Celinda and Paul Hicks
Mrs. Pauline Higgins
Ivelone L. Hodges
Ray and Doretta Hofland
Jeff and Shawn Holter
Darlene and Neil Horne
Richard A. House
Tammy Humphries
Patti Hunthausen
John Huot
Angela E. Huschka and
Ken Kops
Ruth Ann Hutcheson
Carl and Maret Hutchinson
Richard Elliot Huxley
René Ingram
Island Liquor
Julie and Dave Jackson
Carol and Jim Jacobsen
Marjory Jacobson

Kleen King, Inc.
Laverne H. Knowles
The Kochs
Chris and Larry Koehler
**John and Mary Margaret
Kotson**
Doug and Margie Krebs
David W. Kunkle
Ladies Ancient Order of
Hibernians
Ray and Donagene
LaFromboise
Kirby and Becca Lambert
William D. Lamdin III
Rodney and Edith Landry
Charles R. Larson and
Thresa Grigsby
Deb and Steve Larson
Mary G. Larson
Bill and Bobby Lavinder
Kendra and Chad Lenhardt
Barb Lester
Sharon Lewis
W. Dawson and Deanna List
Mike and Dawn Lopach
Joanne and Doug Finstad
Jean Lowry
Joy Lucht
Jack D. Lund
Lorretta Lynde and
Robert Fusie
Rod MacDonald

Sue Stegmiller
 Barb Stephen
 Jim Stevens
 David R. Stewart, Sr
 Craig and Christy Stiles
Melissa Stiles
 Ward and Mary Stiles
 Lisa Stimatz
 Maureen and Chuck Stohl
 Ruth and Bill Straley
 Ken and Becky Stuker
 Jack Stults and
 Daphne Crosbie
Nancy Sturm
 Summit Print Solutions
 Ina and Gordon Swanson
 Mary-Michael and Val
 Szudera
 Dale Taliaferro
 Ann M. Tanke
 Art and Diane Taylor
 C.R. Taylor
 Larry E. Taylor
 Suzanne Thigpen
 Jeffery and Lila Thomas
 Katherine L. Tomaskie
 Jeremy Treib and
 Kate Treib
 DeLores Tubbs
 Vicki, Jim, Andy and Justin
 Turner
 Twisted Bliss Boutique
 Patricia and Peter Tyanich
 Ugrin, Alexander, Zadick
 and Higgins, P.C.
 Valley Farms
 Lisa Verzani
 Jan Vogel
 Paul Waddell
 Donald and Betty Walker
 Marcella Sherfy Walter
Dr. Todd B. Wampler
 Shirley J. Warehime
 Terri and Mike Watson
 Jane and Perry Weidler
 Cheryl Welliver
 Tara Wells
 Niki Whearty and
 James Reynolds
 James H. Wilkins
 Maureen Williams and
 Susan Brown
 Charles Witkowski
 Anne and Michaela
 Wolfinger
 Michael J. Wong
 Henry A. Youngs
 Kathleen Zarndt and
 Jim Burkholder
Mike Ziegler
 Ted and Karen Zimmerman
 Rhe E. Zinnecker
 Carol Zirkle

FRIENDS

\$50 TO \$99

Marcia and John Allen
 Pearl, Emily and Amanda Allen
 Charlotte Allison
 Betsy Anderson
 Dr. Chuck Anderson and
 Lana Anderson
 Jo Ann Anderson
 Janet Andrew
 Anonymous (9)
 Patricia L. Arms
 Barbara Arthur
 Gayle G. Astore
 Alea C. Avila
 Denise and Jim Backstrom
 The Bagel Company
 Helen Bailey
 Linda Balcerzak
 Roberta R. Ballard
 Dawn Barnes
 Judy Barraugh
 Ed and Mary Barrett
 Timothy and Tricia Bartz
 Tom and Louise Battershell
 Rebecca and Marty Baumann
 Brigitte Bellefleur
 Bob and Mary Ann Benson
 Barbara and Ken Berg
 Becky Berger and Dave
 Bachmann
 Teri Berglund
 Beta Sigma Phi - Preceptor
 Iota Chapter
 Big Sky Institute for the
 Advancement of Nonprofits
 Sara Bjornson and
 Megan Bjornson
 John and Jenny Bloomquist
 and Family
 James W. Borchardt
 Janet Bouchee
 Eleanor H. Bowen
 Joan and Randy Bowsher
 Robert and Janet Braico
 Juanita Bray
 Yvonne and Charles Brooke
 Lonnie and Phyllis Brookshire
 Jan and Bill Brown
 Kizzie R. Brown
 Randy Brown
 Dewey and Nancy Bruce
 Bret and Susan Brunner
 Joyce and Doug Bruursema
 Shirley Buechler
 Rick and Diane Burger
 Liz Burke
Pat and Joan Burns
 Kenneth R. Bushnell
 Ann Buss
 Cookie Butts

Dr. Stephen Cade
 Rusty and Pat Callbeck Harper
 Marlene and Murdo Campbell
 Nancy E. Campbell
 Lenore J. Carlson
 Kathleen Carpenter
 Nan Cervenka
 Dr. S. Wayne Chamberlin
 JoAnn Chambers
 Mark Chambers
 J. Andre Chovanak and
 Juanita Chovanak
 Carolyn A. Cirincion
Dr. Nicole Clark
 Deanna I. Clearman
 Beverly Clevenger
 Juliann Clum
 Colleen Coffey
 Dave and Helen Cogley
Jennifer Colegrove
 Collision Pro Inc.
 Amber M. Colvin
 Don and Nadine Copley
 Jeff and Paula Cory
 Jennifer M. Craig
 Linda and John Craig
 Mary and Dan Crawford
 Jack and Maxine Crider
 Brad Culver and
 Robie Baldwin-Culver
 The Currys
 Lana, Dana, Bryana, and Jacob
 Curry
 Mike DaSilva
 Jean A. Davis
 Dorothy A. Dawson
 Tina Dawson
 Betty S. Dean
 Peter F. Dech
 Carol and Gary Dees
 Rich DeSimone
 Dan DeWolf
 Janis and John Dietz
 Wanda and Collin Dobrovolny
 Robert and Smithe Docktor
 Carolyn and Charles Doering
 Karen and Jon Driessen
 John and Kathryn Driscoll
 Stanley and Pamela Duensing
 Renee and Louis Dumas
 Carol and Gary Duval
 Jerry and Sherry East
 Joan Eaton
 Jane Ehlang
 Denny Eickert
 Jo and Parnell Eidum
 Marie Engstedt
 Jo Anne Eschler
 Susan Ethridge
 Colleen M. Evans
 Donna and Ken Everett
 Exploration Works

Kristina Facundus
 Farcountry Press
 Michael and Roberta Feriancek
 Laura J. Fix
 Kevin and Bekki Flanagan
 Gail Flesch-Green
 Dorothy Flynn
 Kevin and Donna Forkan
 Karen and Pat Fowler
 Carolyn A. Fox
 Thomas E. Francis
 Pat and Gene Franks
 Patrick Frawley
 Brenda Freborg
 Janice Frisch
 Marie Fuhrmann
 Delvin and Bonita Gebhardt
 Betty and Becky Gillespie
Phyllis Gilreath
 Helen P. Goetz
 Carolyn Gorshe
 James R. Grace
 John and Carol Graham
 Nancy Granger Cormier
 Melody Grant
 Goose and Jan Gregson
 Lynne Grosfield
 Frank and Bonnie Gruber
 Debbie and Jeff Hagener
 Lori K. Hall
 FayDee Hamilton
 Marla and Sam Hammond
Terry Hamper
 Eleanor Hardy
 Joann Harper
 Ed and Joanna Harrelson
 Phil and Karry Hauck
 Terry Hawkins
 Liz Hayden and Doug Rogness
 Joan and John Heberly
 Bill Heer
 Joanne and Jim Heffernan
 Fred E. Heiser
 Joann Heller
 Gretchen and Marty Heller
 Janet Hess-Herbert and Jeff
 Herbert
 D. Nan Herrin
 Gail Hewitt
Alanna Hiett
 Rick and Betti Hill
 Grace M. Hiltabrand
 Helen Hoffman
 Mr. and Mrs. Roger Holmes
 LeRoy and Fern Holshue
 Home Beautifiers
 Art and Bonnie Howell
 Kevin and Joyce Huddy
 Caroline Hudnall
 Tori Hunthausen
 Bill and Maureen Hunthausen
 Cynthia E. Hustad

Friends (\$50 – \$100) Continued

Terry Hutton	Arnold and Donna Sue Lyon	Dean and Diane Olsen Ed Olson	Connie and Doug Roope	Candace Sweet
Kristine and Ken Inabnit	James M. Madison	On Broadway	Michael J. Root	John and Wilma Tabaracci
Brian Jackson	Lynne and Jim Maierle	Outside In - Betsy Pennington	Dick, Nung, Doug and Loly Ross	Audrey Tallon
Annette L. Jacobson	Sandee and Mac Main	Judy Owens	Loyd and Roxanne Rowe	Debbie and Raymond Thares
Jardon Family	Iris A. Maness	Amberly Pahut	Debra and Scott Rowland	Brenda Thomas, Richard Lyon and Family
Sally G. Jellison	Col (Ret) and Mrs. Edward V. Mangis	Zach and Jean Pallister	St. Vincent Healthcare	Pam and Glen Thomas
Kathleen C. Jepson	Suzy and Dave Mannix	Melanie and Bob Pankratz	Les A. Saisbury	Ginny Thomas, Cathlene Millay, Mary Lou Welch, and Susanne Hellman
Leonard and Barbara John	Elaine C. Marcille	Brian and Debbie Patzer	Don Salter	Jim, Peggy, and Vikki Thompson
Ben Johns	Bob and Barb Marks	Deborah B. Payne	Jody, Larry, and Sean Sanders	Charles and Donna Tielking
Larry and Jeannie Johns	Jennifer Massman	Diane L. Pedersen	Carole Sandin	Patsy Tompkins
Debby Johnson	Nita McCauley	Howard and Michele Pederson	Renne't Sarbu	Dana Toole, Joan Toole and Jeff Folsom
Rick E. Johnson	Loreto McCullough	Kim and David Pepper	Margaret F. Schaefer	Kimberly Towe
Suzanne and Iver Johnson	Wilma E. McEachern	Marilynn Petek	Donna and George Schiller	Layne and Patrick Trammelle
Thomas and Kerry Johnson	Robert and Jane McGlynn	Mary and Clyde Peterson	Joyce Schillinger	Judy and Mike Trevor
Judy and Ted Julian	Shona and Scott McHugh	Fred and Celeste Pfister	Jean Schmitz	Jen and Jim Tucker
Just Tapped Gourmet Oil & Vinegar	Carol McKerrow	Ray and Noel Phillips	JoAnn and Tom Schneider	Donna Turcott
Cathy and Virgil Kaiser	Maryjo and Ken McLean	Beverly D. Pickett	Dolores Schulke	Anne and Neil Tyree
Ruby Lee Kasman	Billie Jo Meglen	Mary Pitch	Terry and Jay Scow	Rita and Jack Urbanski
Cherie L. Keil	Patricia M. Mehring	Adam Plate, MD and Betty Plate, MD	Sandra and Raymond Sedey	Andrew and Annie Utick
Marge Keilman	Melaque Mexican Restaurant	Dona and Hank Poeschl	Beverly Senn	Fred and Pat Verzani
Grayce Keller	Thomas Mendyke and Charlotte Jones	Ted and Ronna Polette	Marcella and Delbert Sharbono	Lanae and Keith Vetsch
Doreen Kennedy	Sandy Merdinger	Marion D. Pope	Cathy and Doug Shenkle	Sandy Voytoski
Robert Kercher	Adeline C. Miller	Lowell Poppe	Patsy and Leo Shute	Bruce Wade
Kerins Family	Carolyn and Scott Miller	Elizabeth Rose Pouliot	Dan Sidor	Elmer J. Waystedt, Jr
Margaret Kernan and R. Clifton Caughron	Vernon B. Miller	Jeanne Powell	Joseph E. Sidor, Jr	Mary Lou and Richard Weddle
Barb Kibler	Missiona Lumber Company	Anne L. Presta	Kay Siewert	Karolee and Gus Weickum
James E. Kindle	Deborah and Wayne Moon	Pro Build	Silverwood Theme Park	Vicki and John Weida
Karen Kmet	Jane Morell-Hart	Rick Pyfer	Les and Kim Simkins	Nancy and Duane Westerbuhr
Knox Flowers & Gifts	John and Nancy Morgan	The Caruso Family	Les and Becky Sivertson	William White
Scott M. Knutson	Thomas O. Morrow	Ken and Sandy Quickenden	Andrew R. Skerda	Jim and Sally Wilcox
Ardis M. Kokoruda	Kermit and Jean Mueller	Julie and Wade Railey	Barb Slunaker	Randolph Wilke
Mike Kokoruda	Lorri S. Mullen	William Rainey	Wayne and Lisa Smeaton	Mr. and Mrs. Gerald Willet
Mike Kokoruda	Michael and Shirley Mullen	Jay Ramlo	Ron and Diane Smith	Nancy Winder
T.A. Kummer	Municipal Court, City of Helena	JoAnne Rapley	Sharon and Randy Smith and Family	Rick and Connie Wine
Julie A. Kuntz	Margo Munson	Robert T. Rask	Dr. William C. Snider	Robert and Josephine Wirth
Calvin Lantz	Lauren and Mark Murphy	Myrtle 'Mike' Reimer	Robert L. Solomon	Sue Woo
Roberta M. Lawson	Mark, Sheila, Michael, Logan, Kaylee and Alivia Nathe	Karen Revious	Linda and Bob Sparing	Jane Wood
Sidney and Karen Lebahn	Evelyn H. Nelson	Chelsia Rice and Sharla Crawford	Katie Spiroff	Randy and Patty Wood
Tina and Wally LeClaire	Norene Nelson	Gail and Robert Ricker	Debbie Spranget	Lynn and Terry Woods
Dorothy Leischner	Network For Good	Lori and Brent Ricks	Sheri Sprigg	Bill and Gayle Woon
Pam Lemieux and Family	Madeleine Neumeyer	Ron and Gwen Riddock	Sue and Ed Standley	York Bar
Anne Lenik	Rita Newman	Julie Robbins	Mark and Debbie Starr	Homer Young
Angie and Paul Lewis	Irene and Jim Newton	Joyce and Dave Roberts	Bill and Colleen Stephenson	Nancy and Steve Young
Laurene Lindgren	North Valley Hospital	Julia and Andrew Roberts	Betty Stinchfield	Pat and Harley Ziesman
Mark and Betty Lindsay	Joseph D. O'Leary	Mr. and Mrs. Gerald Rodacker	Stockman Bank	
Angie, Carl and Carly Lindstrom	Joe and Gretchen Olheiser	Anna Rolando and Ryan Casne	Bill Story	
Darlene Lloyd		Hazel M. Romasko	Darrell J. Stout	
Dawn and Scott Lockwood		Billy W. and Mary Lou Rook	Laurie Sullivan	
Faye Logan			Dixie Sutherland and Lois Hensley	
Lumberyard Supply & Wausau Supply Company				

2016 FUNDRAISING EVENTS



The 2016 **Pinwheel Pledge** featured Drenda, a breast cancer survivor, and Lisa, a 6-year survivor of ovarian cancer. Both ladies show us that no matter where a person is in the cancer journey, there is still a lot of life to live along the way! And with your help, the Foundation can fulfill its promise to be there for them *Until there is a Cure*. Because of your generosity, nearly \$45,000 was raised to assist cancer patients with needs not covered by insurance.



It was a circus...at the **2016 Golf Tournament** "Under the Big Top!" Ninety-six players and twenty-five volunteers clowned around to raise money for a new ambulance. A total of \$15,753 started us off towards our goal of \$200,000.



Sumptuous décor and a feast fit for the sultan—that was this year's **gala** "Midnight at the Oasis." With 345 attendees and dozens of volunteers, another \$54,343 was raised for the Ambulance project.



St. Peter's Hospice provides this community with an amazing service—compassionate care for both patients and families at the end of life. Thank you to all our generous donors who make this service available to all, without regard to personal finances and ability to pay. A total of \$77,600 was raised from over 1,100 donors during this year's **Light A Life** fundraiser, as they honored and remembered nearly 4,000 family, friends, and loved ones.



Remember to join us for these 2017 events to help us continue serving our patients and community.

- Golf Tournament – August 11, 2017
- Light A Life – December 7, 2017

A SPECIAL THANK YOU

None of these events would be possible without the amazing support of all of our **volunteers!** Whether you acted as a hole-sitter at the golf tournament, covered hundreds of chairs and decorated at the gala, or filled out acknowledgement cards for the Pinwheel Pledge and Light A Life—your contributions to our efforts are irreplaceable.

For sharing their time, treasure, but most of all talents—thank you to all of our volunteers!

Pinwheel Pledge spokesperson, Drenda • Phil Howeth and Lynn Staley volunteering at the Golf Tournament • The First Interstate Bank golf team • Doris Romanisko and Kate Logsdon with "Humphrey" at the Gala • Light A Life tree lighting ceremony



photo courtesy of Kevin Hudson, Helena Photography

Here to Serve

ST. PETER'S SENIOR MANAGEMENT TEAM



Fred Olson, M.D.
*Interim President and
Chief Executive Officer*



John Cassani, M.B.A., D.O.
*President
St. Peter's Medical Group*



Bill Hamilton, M.D.
*Interim Chief
Medical Officer*



Karin Olsen, M.A.
*Foundation
Executive
Vice President*



John Green
*Vice President
Finance*



Dan Sullivan
*Vice President
Ancillary Services*



Andrea Groom, M.S., A.P.R.
*Executive Director
Corporate Communications*



Karla Smith
*Director of
Human Resources*